

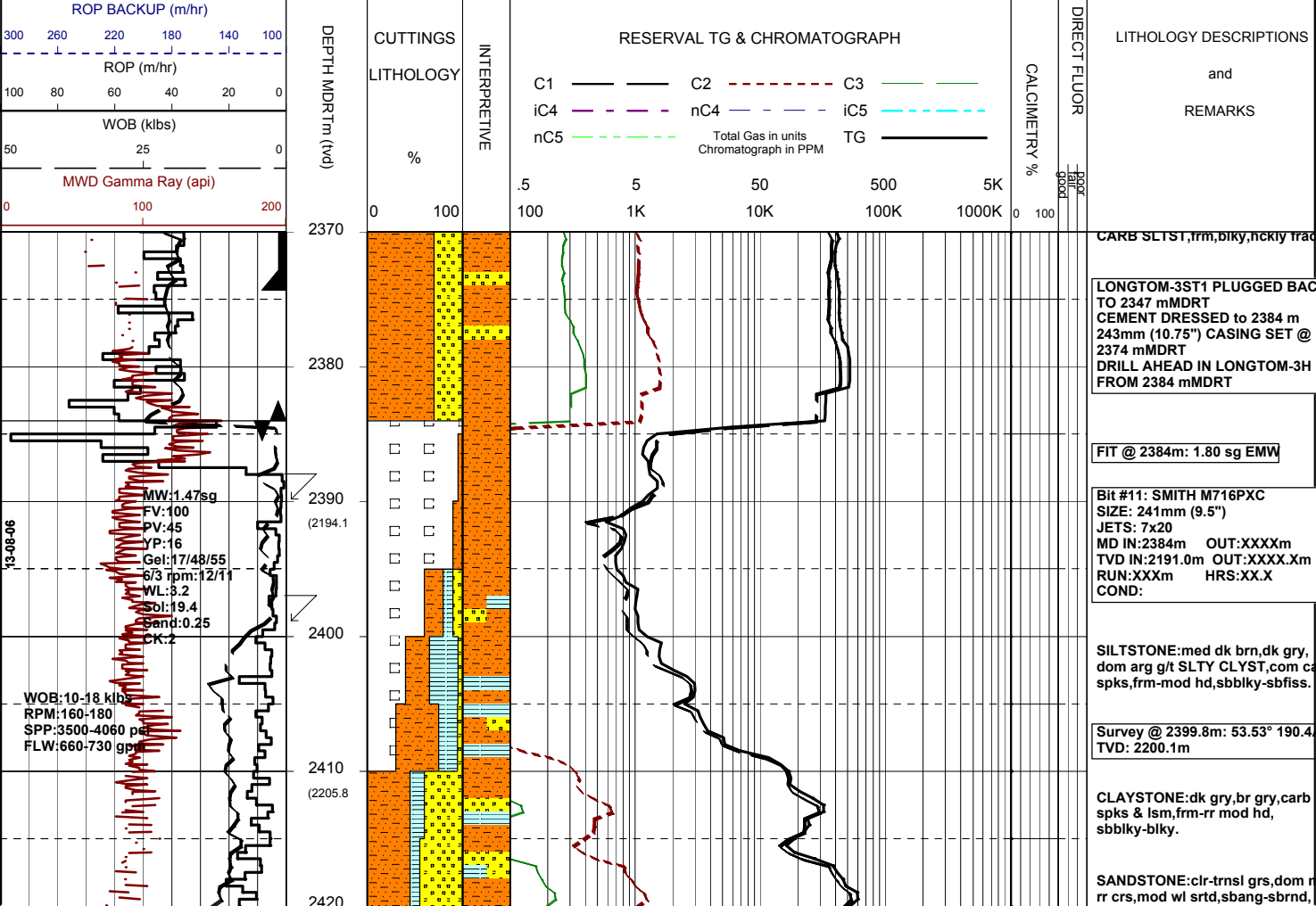


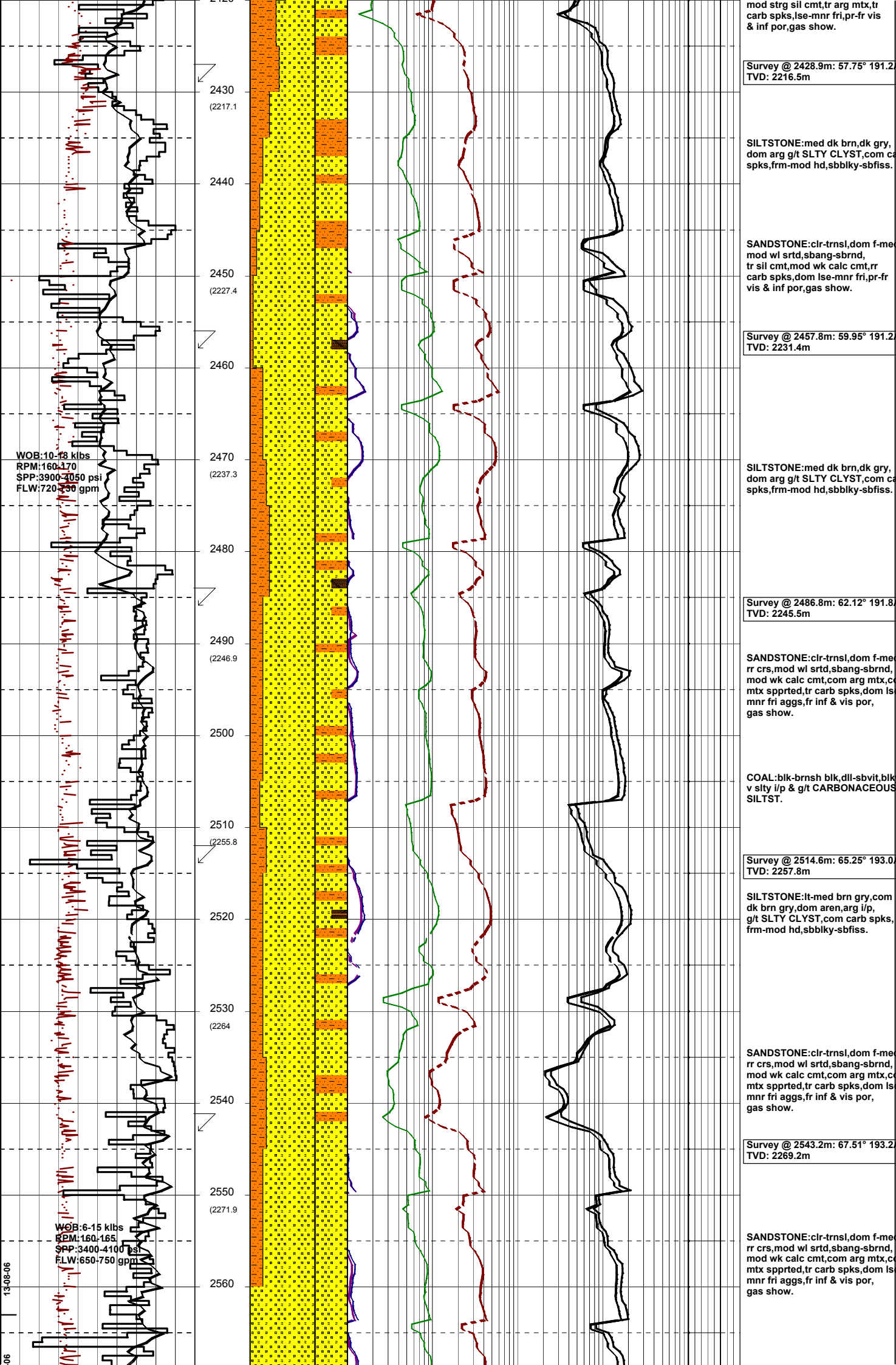
MASTERLOG LONGTOM-3H



GENERAL	POSITION	HOLE / CASING INFO	DATE / DEPTH	ENGINEERS
Country : AUSTRALIA	Latitude : 38°05'34.63"S	914mm(36") hole to: 111.8m	Spud Date : 02-08-2006	T. N. KYAW
Permit : VIC/P54	Longitude : 148°18'41.52"E	559mm(22") hole to: 1005m	Total Depth Date : XX-XX-2006	A. DUNN
Field : LONGTOM	UTM Co-ord X (m E): 615006	241mm(9 1/2") hole to: m	Total Depth (mMDRT): m	D. ADDERLEY
Basin : GIPPSLAND	UTM Co-ord Y (m N): 5783059.3	762mm(30") Cond. to: 110.8m	True Vertical Depth (mTVDSS): m	
Well Type : APPRAISAL	RT to LAT (m): 21.5	406mm(16") Csg. to: 995.32m	Log Scale : 1/ 500	
Rig: OCEAN PATRIOT	RT to Sea Bed (m): 78.2		Final Status : ??	

ABBREVIATIONS	LITHOLOGY LEGEND	ENGINEERING LEGEND
<p>MW Mud Weight</p> <p>FV Funnel Viscosity</p> <p>PV Plastic Viscosity</p> <p>YP Yield Point</p> <p>Gel Gel Strength</p> <p>WL Water Loss</p> <p>KCl Potassium Chloride</p> <p>Cl Chlorides</p> <p>Incl Inclination</p> <p>Az Azimuth</p> <p>WOB Weight on Bit (klbs)</p> <p>RPM Rotations Per Min</p> <p>FLW Flow Rate (gpm)</p> <p>SPP Pump Pressure (psi)</p> <p>RR Re-Run Bit</p> <p>TG Trip Gas</p> <p>CG Connection Gas</p> <p>BG Background Gas</p> <p>DGP Drilled Gas Peak</p> <p>MM Mud Motor</p>	<p>Claystone</p> <p>Siltstone</p> <p>Shale</p> <p>Fine SST</p> <p>Medium SST</p> <p>Coarse SST</p> <p>Mari</p> <p>Clay, Limestone</p> <p>Limestone</p> <p>Dolomite</p> <p>Coal</p> <p>Volcanic</p> <p>Lithic Fragment</p> <p>Foraminifera</p> <p>Fossils</p> <p>Bryozoa</p> <p>Sponges</p> <p>Brachiopoda</p> <p>Cement</p> <p>Glauconite</p> <p>Pyrite</p> <p>Iron Minerals</p> <p>Mica</p> <p>Siderite</p>	<p>Shoe</p> <p>Deviation survey</p> <p>DST</p> <p>TEST Test</p> <p>Sidewall Core</p> <p>Core</p> <p>DOLOMITE</p> <p>RFIT</p> <p>FIT</p> <p>Mud loss</p> <p>Mud gain</p>





mod strg sil cmt, tr arg mtx, tr carb spks, lse-mnr fri, pr-fr vis & inf por, gas show.

Survey @ 2428.9m: 57.75° 191.2°
TVD: 2216.5m

SILTSTONE: med dk brn, dk gry, dom arg g/t SLTY CLYST, com carb spks, frm-mod hd, sbbiky-sbfiss.

SANDSTONE: clr-trnsl, dom f-me, mod wl srtd, sbang-sbrnd, tr sil cmt, mod wk calc cmt, rr carb spks, dom lse-mnr fri, pr-fr vis & inf por, gas show.

Survey @ 2457.8m: 59.95° 191.2°
TVD: 2231.4m

SILTSTONE: med dk brn, dk gry, dom arg g/t SLTY CLYST, com carb spks, frm-mod hd, sbbiky-sbfiss.

Survey @ 2486.8m: 62.12° 191.8°
TVD: 2245.5m

SANDSTONE: clr-trnsl, dom f-me, rr crs, mod wl srtd, sbang-sbrnd, mod wk calc cmt, com arg mtx, cmtx sppted, tr carb spks, dom lse-mnr fri aggs, fr inf & vis por, gas show.

COAL: blk-brnsh blk, dll-sbvit, blk v stly i/p & g/t CARBONACEOUS SILTST.

Survey @ 2514.6m: 65.25° 193.0°
TVD: 2257.8m

SILTSTONE: lt-med brn gry, com dk brn gry, dom aren, arg i/p, g/t SLTY CLYST, com carb spks, frm-mod hd, sbbiky-sbfiss.

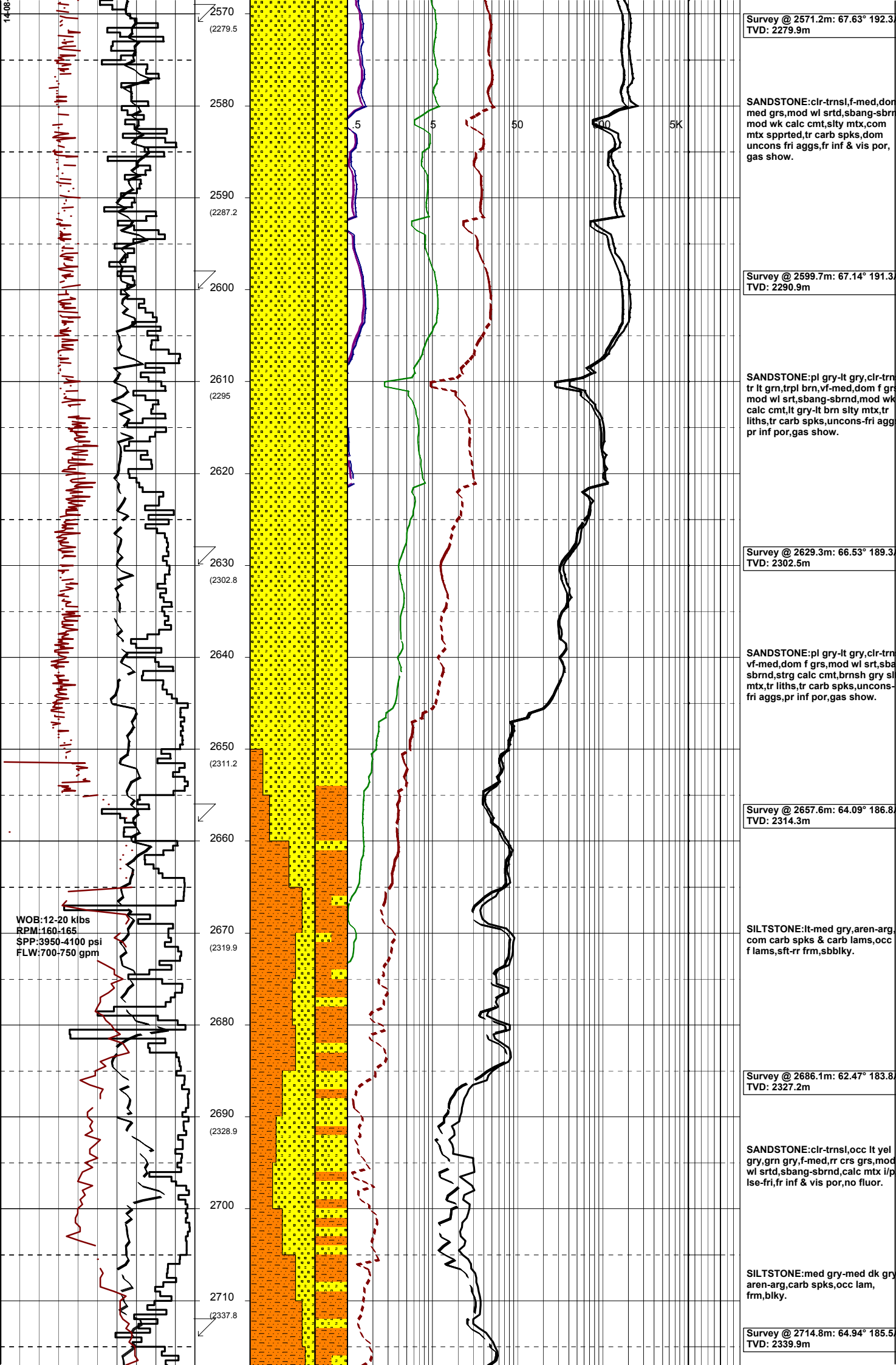
SANDSTONE: clr-trnsl, dom f-me, rr crs, mod wl srtd, sbang-sbrnd, mod wk calc cmt, com arg mtx, cmtx sppted, tr carb spks, dom lse-mnr fri aggs, fr inf & vis por, gas show.

Survey @ 2543.2m: 67.51° 193.2°
TVD: 2269.2m

SANDSTONE: clr-trnsl, dom f-me, rr crs, mod wl srtd, sbang-sbrnd, mod wk calc cmt, com arg mtx, cmtx sppted, tr carb spks, dom lse-mnr fri aggs, fr inf & vis por, gas show.

WOB: 10-18 klbs
RPM: 160-170
SPP: 3900-7050 psi
FLW: 720-230 gpm

WOB: 6-15 klbs
RPM: 160-165
SPP: 3400-4100 psi
FLW: 650-750 gpm



2570
(2279.5)

Survey @ 2571.2m: 67.63° 192.3
TVD: 2279.9m

2580

SANDSTONE:clr-trnsl,f-med,dor
med grs,mod wl srt,shang-sbrn
mod wk calc cmt,slty mtx,com
mtx sppted,tr carb spks,dom
uncons fri aggs,fr inf & vis por,
gas show.

2590
(2287.2)

Survey @ 2599.7m: 67.14° 191.3
TVD: 2290.9m

2610
(2295)

SANDSTONE:pl gry-lt gry,clr-trn
tr lt grn,trpl brn,vf-med,dom f gr
mod wl srt,shang-sbrnd,mod wk
calc cmt,lt gry-lt brn slty mtx,tr
liths,tr carb spks,uncons-fri agg
pr inf por,gas show.

2620

Survey @ 2629.3m: 66.53° 189.3
TVD: 2302.5m

2640

SANDSTONE:pl gry-lt gry,clr-trn
vf-med,dom f grs,mod wl srt,sba
sbrnd,strg calc cmt,brnsh gry sl
mtx,tr liths,tr carb spks,uncons-
fri aggs,pr inf por,gas show.

2650
(2311.2)

Survey @ 2657.6m: 64.09° 186.8
TVD: 2314.3m

2660

WOB:12-20 klbs
RPM:160-165
SPP:3950-4100 psi
FLW:700-750 gpm

SILTSTONE:lt-med gry,aren-arg,
com carb spks & carb lams,occ
f lams,sft-rr frm,sbbiky.

2670
(2319.9)

Survey @ 2686.1m: 62.47° 183.8
TVD: 2327.2m

2680

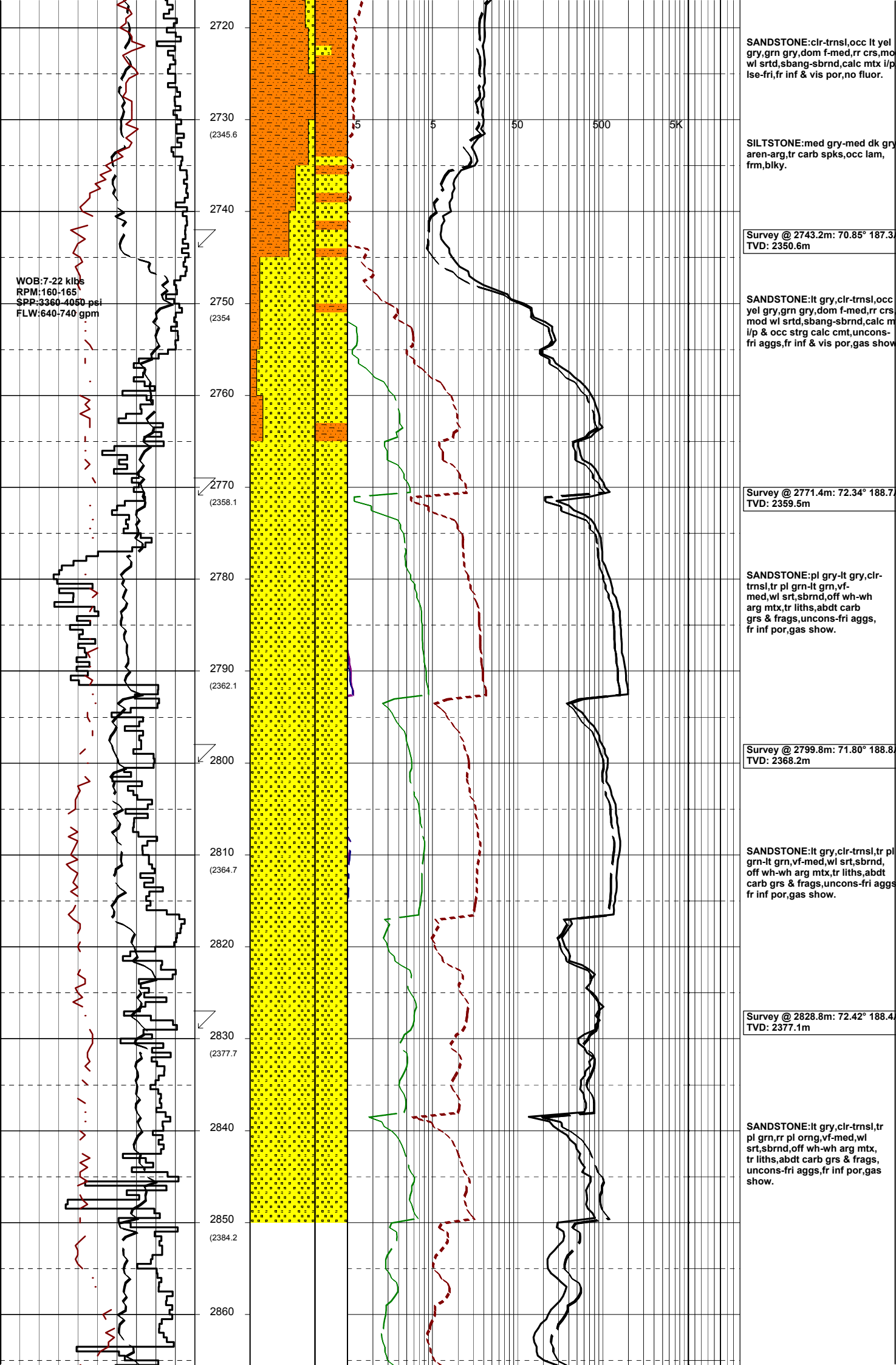
SANDSTONE:clr-trnsl,occ lt yel
gry,grn gry,f-med,rr crs grs,mod
wl srt,shang-sbrnd,calc mtx l/p
lse-fri,fr inf & vis por,no fluor.

2690
(2328.9)

SILTSTONE:med gry-med dk gry
aren-arg,carb spks,occ lam,
frm,blky.

2710
(2337.8)

Survey @ 2714.8m: 64.94° 185.5
TVD: 2339.9m



WOB: 7-22 klbs
 RPM: 160-165
 SPP: 3360-4050 psi
 FLW: 640-740 gpm

SANDSTONE:clr-trnsl,occ lt yel gry,grn gry,dom f-med,rr crs,mod wl srt,sbang-sbrnd,calc mtx i/p,lse-fri,fr inf & vis por,no fluor.

SILTSTONE:med gry-med dk gry,aren-arg,tr carb spks,occ lam,frm,blkly.

Survey @ 2743.2m: 70.85° 187.3°
 TVD: 2350.6m

SANDSTONE:lt gry,clr-trnsl,occ yel gry,grn gry,dom f-med,rr crs,mod wl srt,sbang-sbrnd,calc m i/p & occ strg calc cmt,uncons-fri aggs,fr inf & vis por,gas show.

Survey @ 2771.4m: 72.34° 188.7°
 TVD: 2359.5m

SANDSTONE:pl gry-lt gry,clr-trnsl,tr pl grn-lt grn,vf-med,wl srt,sbrnd,off wh-wh arg mtx,tr liths,abdt carb grs & frags,uncons-fri aggs,fr inf por,gas show.

Survey @ 2799.8m: 71.80° 188.8°
 TVD: 2368.2m

SANDSTONE:lt gry,clr-trnsl,tr pl grn-lt grn,vf-med,wl srt,sbrnd,off wh-wh arg mtx,tr liths,abdt carb grs & frags,uncons-fri aggs,fr inf por,gas show.

Survey @ 2828.8m: 72.42° 188.4°
 TVD: 2377.1m

SANDSTONE:lt gry,clr-trnsl,tr pl grn,rr pl org,vf-med,wl srt,sbrnd,off wh-wh arg mtx, tr liths,abdt carb grs & frags, uncons-fri aggs,fr inf por,gas show.

2720
 2730 (2345.6)
 2740
 2750 (2354)
 2760
 2770 (2358.1)
 2780
 2790 (2362.1)
 2800
 2810 (2364.7)
 2820
 2830 (2377.7)
 2840
 2850 (2384.2)
 2860

5 5 50 500 5K

